

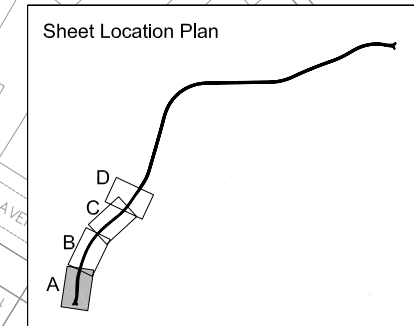
KEY	
●	Impact on residential properties
●	Impact on commercial properties
▲	Substantial adverse impact
▲	Moderate adverse impact
▲	Slight adverse impact
▲	Negligible impact
▲	Slight beneficial impact
▲	Moderately beneficial impact
▲	Substantially beneficial impact
—	Substantial adverse impact
—	Moderate adverse impact
—	Slight adverse impact
—	Negligible impact
---	Public footpath
---	Permissive path
---	Byway
---	BHLR Scheme Centreline

This map is reproduced from Ordnance Survey material with the permission of Ordnance Survey on behalf of the Controller of Her Majesty's Stationary Office © Crown copyright. Unauthorised reproduction infringes Crown copyright and may lead to prosecution or civil proceedings. 100019601 (2008)

## BEXHILL TO HASTINGS LINK ROAD

Figure : 13.14A	Scale	1:1250
Visual Impact Urban - Year 15	Sheet	1 of 4
	Revision	01
		April 2008

Carolyn Dwyer BEng (Hons), DipTrans, DMS, MIHT MIIT  
 Assistant Director, Transport & Waste  
 County Hall, St. Anne's Crescent  
 Lewes, East Sussex BN7 1UE  
 Telephone: 01273 481000

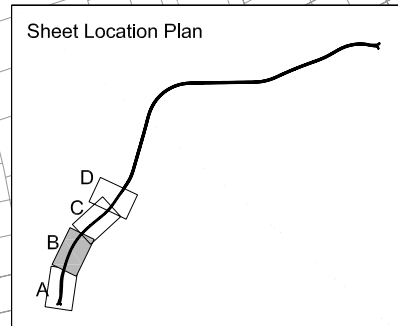


Transport & Environment





KEY	
	Substantial adverse impact
	Moderate adverse impact
	Slight adverse impact
	Negligible impact
	Slight beneficial impact
	Moderately beneficial impact
	Substantially beneficial impact
	Substantial adverse impact
	Moderate adverse impact
	Slight adverse impact
	Negligible impact
	Public footpath
	Permissive path
	Byway
	BHLR Scheme Centreline
	Impact on residential properties
	Impact on commercial properties
	Impact on Public Rights of Way



This map is reproduced from Ordnance Survey material with the permission of Ordnance Survey on behalf of the Controller of Her Majesty's Stationary Office © Crown copyright. Unauthorised reproduction infringes Crown copyright and may lead to prosecution or civil proceedings. 100019601 (2008)

## BEXHILL TO HASTINGS LINK ROAD

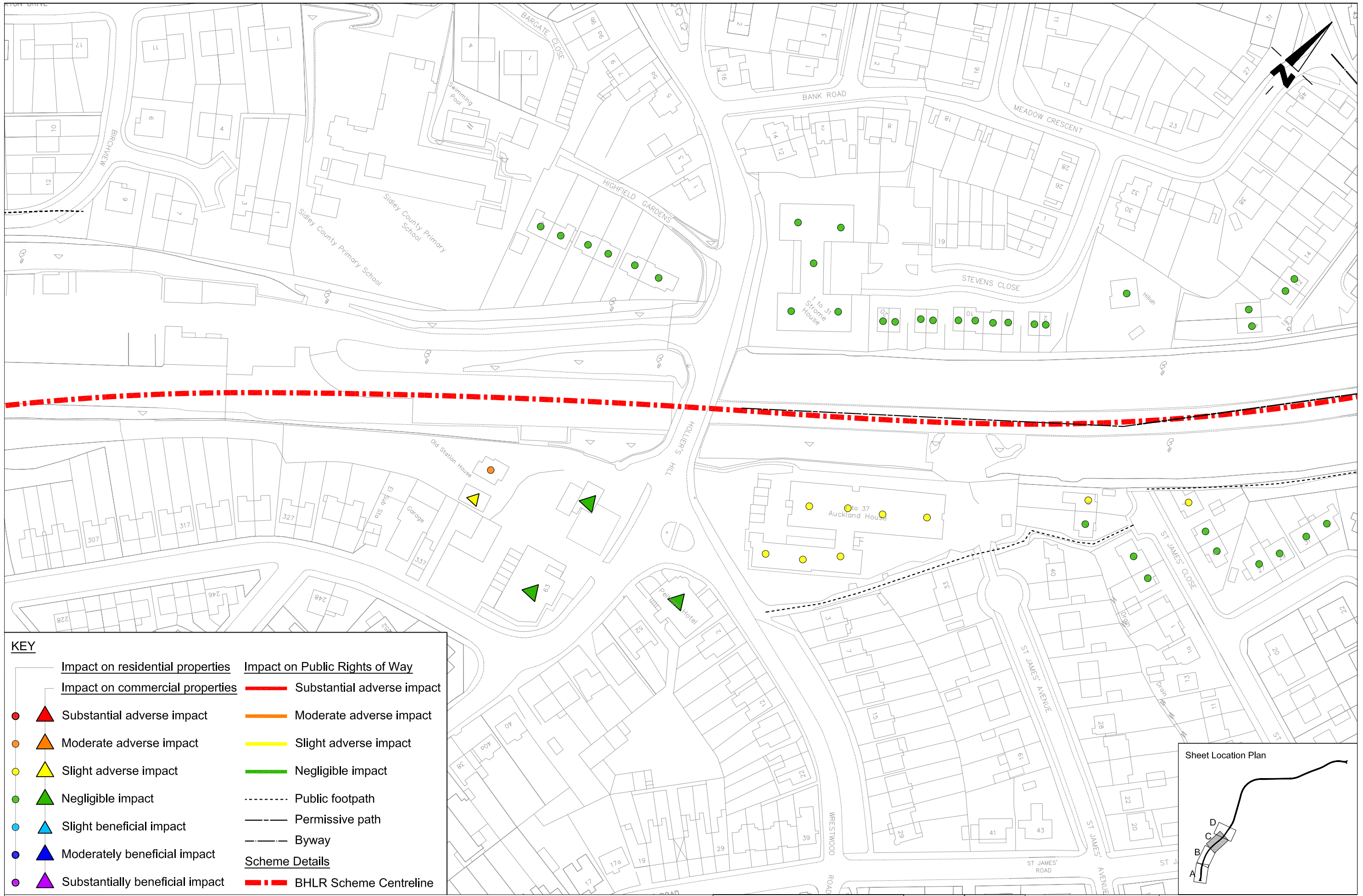
Figure : 13.14B	Scale	1:1250
Visual Impact Urban - Year 15	Sheet	2 of 4
	Revision	01
		April 2008

Carolyn Dwyer BEng (Hons), DipTrans, DMS, MIHT MIIT  
 Assistant Director, Transport & Waste  
 County Hall, St. Ann's Crescent  
 Lewes, East Sussex BN1 1UE  
 Telephone: 01273 481000

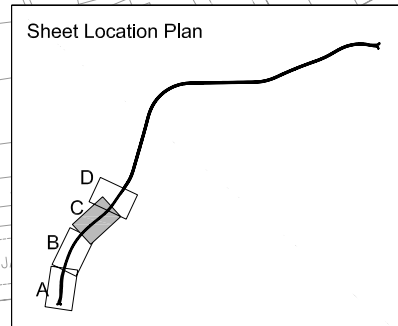
Transport & Environment







KEY	
	Substantial adverse impact
	Moderate adverse impact
	Slight adverse impact
	Negligible impact
	Slight beneficial impact
	Moderately beneficial impact
	Substantially beneficial impact
	BHLR Scheme Centreline
	Substantial adverse impact
	Moderate adverse impact
	Slight adverse impact
	Negligible impact
	Public footpath
	Permissive path
	Byway
<b>Scheme Details</b>	



This map is reproduced from Ordnance Survey material with the permission of Ordnance Survey on behalf of the Controller of Her Majesty's Stationary Office © Crown copyright. Unauthorised reproduction infringes Crown copyright and may lead to prosecution or civil proceedings. 100019601 (2008)

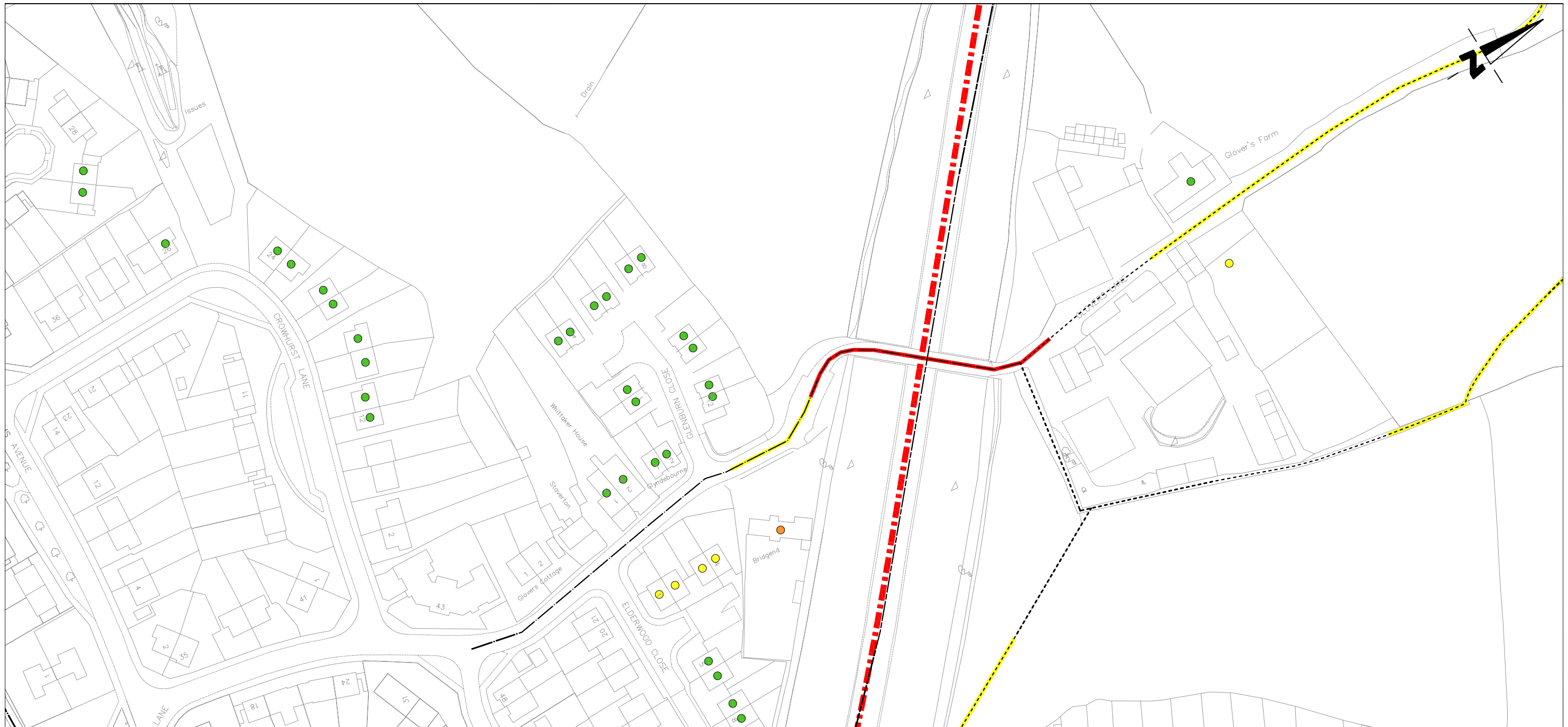
## BEXHILL TO HASTINGS LINK ROAD

Figure : 13.14C	Scale	1:1250
Visual Impact Urban - Year 15	Sheet	3 of 4
	Revision	01
		April 2008

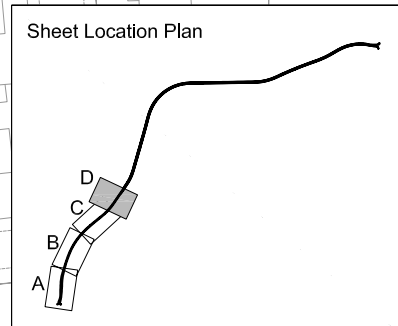
Carolyn Dwyer BEng (Hons), DipTrans, DMS, MIHT MIILT  
 Assistant Director, Transport & Waste  
 County Hall, St. Ann's Crescent  
 Lewes, East Sussex BN7 1UE  
 Telephone: 01273 481000

Transport & Environment





KEY	
	Impact on residential properties
	Substantial adverse impact
	Moderate adverse impact
	Slight adverse impact
	Negligible impact
	Slight beneficial impact
	Moderately beneficial impact
	Substantially beneficial impact
	Impact on Public Rights of Way
	Substantial adverse impact
	Moderate adverse impact
	Slight adverse impact
	Negligible impact
	Public footpath
	Permissive path
	Byway
<b>Scheme Details</b>	
	BHLR Scheme Centreline



This map is reproduced from Ordnance Survey material with the permission of Ordnance Survey on behalf of the Controller of Her Majesty's Stationary Office © Crown copyright. Unauthorised reproduction infringes Crown copyright and may lead to prosecution or civil proceedings. 100019601 (2008)

## BEXHILL TO HASTINGS LINK ROAD

Figure : 13.14D  
Visual Impact Urban -  
Year 15

Scale	1:1250
Sheet	4 of 4
Revision	01

Carolyn Dwyer BEng (Hons), DipTrans, DMS,  
MIHT MIIT  
Assistant Director, Transport & Waste  
County Hall, St. Anne's Crescent  
Lewes, East Sussex BN7 1UE  
Telephone: 01273 481000

Transport &  
Environment

